



"Insight Heart" is also available at www.squarepharma.com.bd

Insight HEART

Vol: 11 No: 2; 2015



Pulmonary Hypertension

INTRODUCTION

CATEGORIZATION AND PATHOPHYSIOLOGY

WHO Group 1: Pulmonary Arterial Hypertension (PAH)

WHO Group 2: Pulmonary Venous Hypertension (PVH) Due to Left Heart Disease

WHO Group 3: Pulmonary HTN Due to Lung Disease/ Hypoxemia

WHO Group 4: Chronic Thromboembolic Pulmonary Hypertension (CTEPH)

WHO Group 5: PH Due to Unclear Multifactorial Mechanisms

PRESENTATION

DIAGNOSTIC EVALUATION

THERAPEUTIC OPTIONS

WHO Group 1: PAH
WHO Groups 2-4

A Special Focus:

PATIENTS WITH HEART FAILURE

Cardiology News

Pulmonary Hypertension: Types and Treatments

INTRODUCTION

Pulmonary hypertension (PH), defined as mean pulmonary artery pressure > 25 mm Hg, is being increasingly recognized and diagnosed. This complex disorder has an estimated prevalence of 10-20% within the general population. The observation of PH, whether actively sought or incidentally uncovered on echocardiogram or right heart catheterization, deserves a search for the etiology, an understanding of the pathophysiology, and an appreciation of treatment options. Left heart disease complicated by PH has an estimated prevalence of 3-4 million in the United States and results in a two-fold increased risk of death when right ventricular (RV) failure ensues. While right-sided heart failure symptoms often prompt many clinicians to initiate treatment or referral, the aim of this review is to enhance early accurate classification of PH and an improved understanding of the different therapeutic approaches so they may be employed earlier in the disease course.

CATEGORIZATION AND PATHOPHYSIOLOGY

The World Health Organization-sponsored 2008 Dana Point Clinical Classification schema categorizes PH into five groups based on etiologies resulting in similar histopathologic changes.

WHO Group 1:

Pulmonary Arterial Hypertension (PAH)

With an estimated 15 to 25 cases per million, true PAH encompasses a multitude of etiologies and portends a 1-year mortality of approximately 15% on traditional therapy. It is hemodynamically defined as a mean pulmonary artery (PAP) of ≥ 25 mm Hg plus a pulmonary capillary wedge pressure (PCWP) or

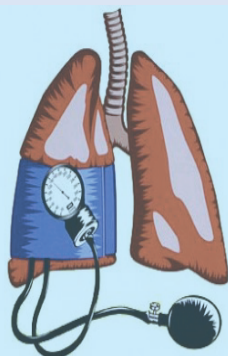
left ventricular end-diastolic pressure (LVEDP) ≤ 15 mm Hg with a pulmonary vascular resistance (PVR) of > 3 woods units. While it is the least common form of PH, Group 1 PAH is the most widely studied.

Formerly known as Primary PH, this group includes idiopathic, familial predominately due to mutations in the BMPR2 gene, which encodes bone morphogenic protein receptor, anorexigen induced PH, portal hypertension, HIV, connective tissue disease, congenital heart disease, myeloproliferative disorders, and schistosomiasis. PAH is generally caused by a vasculopathy primarily affecting the distal pulmonary arteries. The vascular abnormalities are characterized by intimal proliferation and fibrosis, coupled with medial hypertrophy and enhanced pulmonary artery vasoconstriction. Over time, complex plexiform lesions develop and the vasculopathy may be further complicated by thrombus-in-situ. These processes are driven by an imbalance in the production of endothelin and thromboxane A₂, both potent vasoconstrictors and initiators of cellular proliferation. Vasoconstriction is further enhanced by rapid hydrolysis of cyclic GMP to inactive GMP by phosphodiesterase-5, thus impairing the vasodilatory endothelial response to nitric oxide.

WHO Group 2:

Pulmonary Venous Hypertension (PVH) Due to Left Heart Disease

Pulmonary Venous Hypertension (PVH) due to left heart disease is the most commonly encountered secondary form of PH. It results from chronically elevated left atrial pressure as a consequence of left heart disease: left ventricular (LV) systolic or diastolic dysfunction, and valvular disease. It is hemodynamically



defined as a mean pulmonary artery (PAP) of ≥ 25 mm Hg plus a pulmonary capillary wedge pressure (PCWP) or left ventricular end-diastolic pressure (LVEDP) ≤ 15 mm Hg.

Relatively little is known about the initial pulmonary vascular changes that underlie PVH. It is postulated that elevated pulmonary artery (PA) pressures result from a “back-up” of venous pressure secondary to left atrial hypertension. In a subset of these patients, the resultant venous hypertension may be complicated by an additional “reactive” phenomenon of vasoconstriction and remodeling in the distal pulmonary arteries. This vascular remodeling has been identified in autopsy specimens from patients with mitral stenosis that reveal typical pulmonary arterial vasculopathic changes like those encountered in Group 1.

WHO Group 3:

Pulmonary HTN Due to Lung Disease/Hypoxemia

WHO Group 3 is most commonly seen in the setting of chronic obstructive pulmonary disease (COPD), Interstitial lung disease (ILD), and Sleep Disordered Breathing. The exact frequency of PH in COPD and ILD is unknown; however in one series of patients with severe COPD, the incidence of PH exceeded 50%.

WHO Group 4:

Chronic Thromboembolic Pulmonary Hypertension (CTEPH)

WHO Group 4 represents PH that is a result of chronic pulmonary thromboembolic events. Pengo et al. have estimated the cumulative incidence of CTEPH in patients presenting with acute PE and no other venous thromboembolism history to be 3.8% after 2 years in a prospective, longitudinal study. Pulmonary arterial hypertensive arteriopathy appears to be the driving force behind the microvascular changes seen. Intraluminal thrombus leads to classic arteriopathy of both small muscular arteries and arterioles just distal to the partially or fully occluded vessel. This also occurs in the non-obstructed vessels that are spared, likely as a result of high shear stress.

WHO Group 5:

PH Due to Unclear Multifactorial Mechanisms

WHO Group 5 is a category of miscellaneous causes of

pulmonary hypertension with unclear pathogenesis. Sarcoid lung disease, glycogen storage disease, and thyroid disorders are just a few examples that fall within this class.

PRESENTATION

Dyspnea is the most common presenting symptom at presentation of PH, and PH should always be included in the differential diagnosis for breathlessness and exercise intolerance. Lower extremity edema and syncope are encountered, though less frequently and typically in more advanced stages of the disease. Chest pain is often overlooked as a consequence of progressive PH. Angina due to PH results from increased right ventricular (RV) myocardial oxygen demand due to high wall stress, as well as a drop in systolic blood flow in coronary branches to the RV, and occasionally compression of the left main coronary artery by a dilated main pulmonary artery.

Symptom severity is classified according to WHO functional class, a modified form of the New York Heart Association classification of heart failure. WHO functional Class 1 indicates patients with PH who have no limitation in physical activity, whereas Class II indicates a slight limitation. Such patients experience dyspnea, fatigue, chest pain, or near syncope with ordinary activity but are comfortable at rest. Marked limitation defines Class III with less than ordinary activity precipitating symptoms. Class IV patients often have symptoms even at rest and exhibit signs and symptoms of right heart failure. Syncope is considered to be a Class IV symptom. WHO functional classification predicts prognosis and directs treatment.

Physical examination and radiography can also suggest a possible diagnosis of PH. In advanced PH, signs of rightsided heart failure may be present. These include an elevated jugular venous pressure, hepatojugular reflux, ascites, hepatomegaly, or lower extremity edema. Auscultation can reveal a tricuspid regurgitation murmur, an increased pulmonic component of the second heart sound (P2), or a right ventricular gallop. Palpation of the precordium may reveal an RV lift as well. Review of chest radiography can uncover dilated pulmonary arteries, enlarged right atria and RV contour, and peripheral pruning.

DIAGNOSTIC EVALUATION

Echocardiography: Transthoracic echocardiography is the initial diagnostic tool if PH is suspected after the history and



physical exam. A screening echocardiogram is also recommended for clinical conditions associated with a high pretest probability of PAH, including known BMPR2 mutation and systemic sclerosis. Conditions with known PAH risk including portal hypertension and congenital heart disease should also have periodic echocardiograms, especially if symptoms suggestive of PH arise. Elevated estimated pulmonary artery systolic pressures are often detected incidentally on echocardiograms and a rational approach to such patients is a focus of this review.

The echocardiogram is central to the diagnosis and management of PH. It provides an estimate of the pulmonary artery systolic pressure and assessment of right atrial (RA) and right ventricular (RV) size and function. The use of agitated saline contrast can exclude the presence of an intracardiac shunt, and is recommended as part of a PH evaluation. Of equal importance, the echocardiogram also may alert the clinician to other common PH associated conditions - most frequently, left heart disease.

Several distinct echo findings can help to distinguish a Group 2 PH (PVH) from other categories. Echocardiographic characteristics of PVH include a dilated left atrium (LA) or ventricle (LV) and left ventricular hypertrophy. Importantly, left ventricular ejection fraction (LVEF) can either be reduced or preserved. Mitral regurgitation will often be visualized and transmitral Doppler inflow reveals rapid early diastolic filling (E wave velocity > A wave velocity). In contrast, findings more supportive of PAH include a normal LA and LV size with a normal to high LVEF. The RV: LV size is generally greater than 1.0 and the RV "takes over" the apex. The transmitral inflow pattern is E<A and there is generally no mitral regurgitation present. As PH progresses and the right ventricle dilates over time, interventricular septal flattening can become pronounced consistent with right ventricular volume and pressure overload.

Additional non-invasive testing:

Pulmonary artery systolic pressure (PASP) can be elevated for multiple reasons other than an increased pulmonary vascular resistance. Thus, initial testing should focus on identification of underlying etiology. Left atrial hypertension caused by left sided heart disease (valvular, systolic or diastolic dysfunction/heart failure) can often be detected on echocardiogram. High output cardiac states need to be excluded including anemia, pregnancy, cirrhosis, AV fistulas, or hyperthyroidism. Increased systemic blood pressure (i.e. chronic kidney disease)

can also cause increase pulmonary blood flow leading to increased pulmonary pressures. If these common causes of elevated PASP are ruled out than additional testing is warranted.

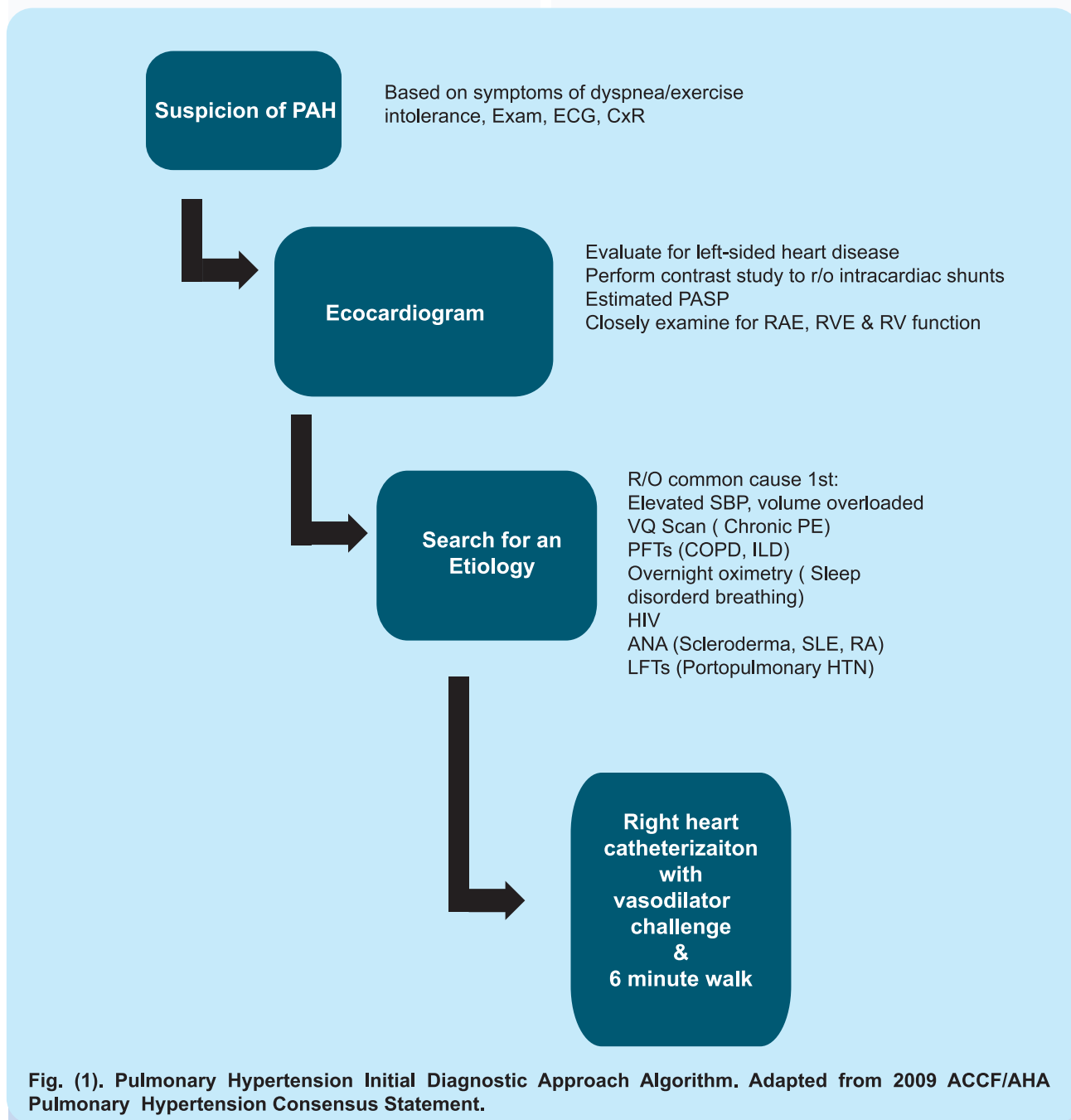
A 6 minute walk test is an easy way to evaluate for hypoxemia and is strongly predictive of survival in the PAH population. Laboratory evaluation with antinuclear antibody, HIV, and liver function test should also be obtained. Pulmonary function tests, overnight oximetry, and Ventilation/Perfusion scans can also aid in the determination of etiology. Spiral computed tomography (CT) is not recommended in place of VQ scans because of the possibility that thromboembolic disease in the smaller, more distal vessels might be missed. (see Fig. 1 for algorithm). Invasive hemodynamic testing is the gold standard in diagnosis of PH. PH is a broad term that purely reflects elevated PA pressures, specifically defined as a mean PAP > 25. Right heart catheterization (RHC) is the next step in the diagnostic algorithm for patients who are considered to have likely PAH, a form of PH, to reveal if true vascular obstruction is present. The key feature is an elevated pulmonary vascular resistance (PVR) > 3 woods units. The RHC is also vital for distinguishing PAH (PCWP ≤ 15) from PVH (PCWP>15). The essential measurements include oxygen saturations (in the superior and inferior vena cava, as well as the PA and a systemic artery), RA and RV pressure, systolic/diastolic/mean PAP, PCWP, cardiac output, and PVR. Quality standards during measuring of hemodynamics should be employed. Pressure wave forms should be measured at end-expiration. If PCWP is at all uncertain, LV end diastolic pressure should be measured. RHC is generally very well tolerated with a reported 1.1% risk of adverse events including arrhythmias, hematomas, and pneumothorax. In a large multicenter registry of 7,218 procedures, the overall procedure-related mortality was 0.055%.

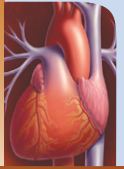
The RHC not only provides a confirmatory diagnosis, but aids in determination of prognosis and allows for an assessment of pulmonary vasoreactivity. Vasodilator challenges are an essential component of the invasive hemodynamics for individuals with Group 1 PAH. A positive response to pulmonary vasodilator challenge is defined as a decrease in mean PA pressure of at least 10mmHg to an absolute mean of less than 40 mmHg without a decrease in cardiac output. A positive test predicts safety of response to calcium channel blockers, more commonly observed in the Idiopathic PAH group. Patients without evidence of a "reactive" pulmonary vasculature generally have more advanced disease and

strong consideration should be given for more aggressive treatment.

Inhaled nitric oxide is generally the agent of choice for acute vasodilator testing given the ease of use and limited adverse effects. Intravenous epoprostenol and adenosine are alternatives though they are more cumbersome to administer and may have additional

adverse effects. Caution should be undertaken in the administration of these agents in patients with coexistent left heart disease, as pulmonary edema can be triggered possibly by selective arterial vasodilation leading to flooding of the capillary bed from elevated left atrial pressures.





PH: A Progressive Disease

As PH progresses, the PVR continues to rise, reflecting the on-going abnormal structural changes in the pulmonary arterial bed. Elevated PVR increases after load to the RV, which is a thin-walled structure better suited to a much lower-pressure system. Initially, pulmonary artery pressures rise until the RV starts to fail, leading to decreased right ventricular stroke volume. PA pressure may then begin to decline and RA pressure may rise, both of which are ominous prognostic signs.

Hemodynamic evaluation is essential for risk-stratifying patients with PH, in large part because RV failure dramatically worsens prognosis. In the REVEAL registry, a contemporary PAH observational study, mean right atrial pressure (RAP) was inversely related to survival. A right atrial pressure less than 10 mmHg with a cardiac index of greater than 2.5 L/min/m² confers low risk. On the contrary, a right atrial pressure of greater than 20 mmHg and a cardiac index of less than 1.0 L/min/m² place a patient at higher risk. Clinical evidence of right-sided heart failure, a significantly elevated BNP, WHO functional Class IV, and rapid progression of symptoms indicate the need for aggressive treatment. A 6 minute walk test of less than 300 meters should raise concern. Cardiopulmonary exercise testing can be useful prognostically, and a peak VO₂ of greater than 10.4 ml/kg/min suggests milder disease.

Echocardiographic assessment of the RV helps to classify patients as well. Minimal RV dysfunction is consonant with low risk, whereas significant enlargement and dysfunction implies a higher risk patient. As PH progresses, RV geometry changes as a compensatory mechanism to continued increases in afterload. The RV initially elongates longitudinally and then in its cross-sectional diameter. Eventually, the latter causes bowing into the LV as the RV takes on a more oval shape. Identification of right ventricular failure is imperative, as it is a major determinant of morbidity and mortality.

THERAPEUTIC OPTIONS

WHO Group 1: PAH

Calcium channel blockers (CCBs), including amlodipine, diltiazem, and long acting nifedipine, may be used in patients who exhibit an acute response to a vasodilator challenge. True responders are generally uncommon. In one study, only 6.8% of the total IPAH had a positive

challenge and maintained their long-term response to CCB. Systemic hypotension is generally the most commonly encountered adverse effect. Patients initiated on CCBs should be followed closely to monitor for sustained efficacy.

WHO Group 1 PAH is the only category with large randomized controlled data to support the use of pulmonary artery vasodilators: phosphodiesterase-5 (PDE-5) inhibitors, endothelin receptor antagonists (ERAs), and prostacyclin analogues. Lower risk patients are often started on oral PDE-5 inhibitors or ERAs. Currently approved PDE-5 inhibitors include sildenafil and tadalafil. Sildenafil is started at 20 mg three times daily. Tadalafil is a once daily administered dose of 40 mg. Studies have shown improved 6 minute walk test (MWT) distance, cardiopulmonary hemodynamics, and reduced symptoms in PAH functional class I-IV patients with both of the PDE-5 inhibitors. Flushing, nausea, and headache are the most commonly reported side effects. Bosentan and ambrisentan are endothelin receptor antagonists. Bosentan has been shown to improve 6MWT, cardiopulmonary hemodynamics, and delay clinical worsening in WHO class II-IV patients. Dosing is twice daily administration of 62.5 mg for the first month and then a target dose of 125 mg. Hepatotoxicity has been encountered in about 10% of patients prescribed bosentan, which requires monthly liver function monitoring. Ambrisentan improves 6MWT and delayed clinical worsening in functional class II and III patients. Dosing is 5 or 10 mg once daily. Pregnancy is contraindicated while on these medications, and monthly pregnancy tests are required. These drugs are generally well tolerated and side effects are typically dose dependent. Fluid retention occurs at rate of about 1.7% with bosentan as compared to placebo and 6% with ambrisentan. Hemoglobin should be checked prior to initiating either drug, and after 1 month of therapy, and periodically as anemia has been reported. Intravenous epoprostenol was the first agent to increase survival in addition to improving hemodynamics and symptoms in patients with severe PAH. The typical starting dose of epoprostenol is 2 ng/kg/min with titration upwards to 20-40 ng/kg/min. Over the last several years, other prostacyclin analogues have been approved as well. Iloprost is inhaled six to nine times daily at either the 2.5 or 5 µg/dose. Treprostinil comes in multiple formulations including intravenous, subcutaneous, and inhaled (3 to 9 inhalations four times daily). The use of prostacyclins is typically reserved for the sickest PAH patients who are unresponsive to other drug therapies. Adverse effects include headache, flushing, rash, diarrhea, and jaw pain. Caution must be taken, because the

Bisocor[®]
Bisoprolol Tablet

2.5 mg
5 mg
10 mg

administration of these agents to patients with elevated left sided filling pressures can result in flash pulmonary edema. If PAH-specific therapies are deemed warranted in patients with underlying lung disease, care must be taken as increased blood flow to non-ventilated alveoli can worsen dyspnea and hypoxemia via this V/Q mismatch.

Lung transplantation remains the only definitive cure for PAH, and is considered in those who do not improve despite optimal medical therapy. Atrial septostomy can be used palliatively in end-stage PAH patients who are not transplant candidates, or in those awaiting transplantation.

WHO Groups 2-4

The primary aim in treatment with WHO Group 2-4, or PH associated disease, is to first and foremost aggressively treat the underlying causative condition. This often will lead to an improvement in pulmonary artery pressures. In Group 2 (PVH), seen primarily in patients with left heart disease, that generally means strict volume control and titration of neurohormonal modulators in systolic heart failure, strict volume and blood pressure control in diastolic heart failure (see special section below), or surgical repair/replacement of the left sided valvular dysfunction. In WHO group 3, antiinflammatory therapies and bronchodilators are the mainstays of COPD treatments and continuous positive pressure at night is essential for patients with sleep disordered breathing. Supplemental oxygen should not be overlooked in the hypoxic patient, as hypoxemia is a potent driver of vasoconstriction. CTEPH, or WHO Group 4 PH, can potentially be cured, and these patients should always be referred to surgical centers with experience in pulmonary thromboendarterectomy. If a patient's transpulmonary gradient and PVR remain elevated after optimal treatment of the underlying condition, pulmonary vasodilators may be considered on an off label basis. However, there are no randomized controlled trials to support the benefit of Group 1 PAH specific therapies in Group 2 and 3 PH, and there are potential risks including worsening pulmonary edema in Group 2 disease and worsening V-Q mismatch in Group 3 disease.

A SPECIAL FOCUS: PATIENTS WITH HEART FAILURE

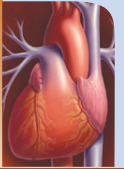
Pulmonary venous hypertension occurs in an estimated 19-35% of patients with left heart disease. Treatment of PVH is aimed at the underlying disease process. Hypervolemia in both diastolic and systolic heart failure is treated with diuretics, salt and fluid restriction.

Optimization of therapy in patients with systolic heart failure include administration of an ACE-I or ARB, beta blocker, aldosterone antagonist and in some patients the combination of a nitrate and hydralazine. Blood pressure control in patients with diastolic heart failure is essential. However, elevated pulmonary artery pressure may persist after augmenting diuresis and optimizing medical therapy. An additional "reactive" phenomenon with superimposed pulmonary arterial disease may exist in a subset of patients with left-sided heart failure. Generally, this reactive vasculopathy is diagnosed when the mean PA pressure is > than 25 mm Hg, PVR > 3 woods units, and the transpulmonary gradient (TPG) is >20 mmHg. It is postulated that this "out of proportion" PH is triggered by chronically elevated pulmonary venous pressures leading to pre-capillary vasoconstriction and remodeling. However, it remains unclear what degree and duration of PVH is required to trigger this phenomenon. Also consider evaluation for COPD, sleep disordered breathing and thromboembolic disease in appropriate patients.

The 2009 PH Consensus document notes that if after optimal treatment of the etiology of PVH, the TPG and PVR remain elevated in the setting of a normal or only minimally elevated PCWP, that PAH specific therapy may offer clinical benefit. However, traditional PAH therapies have been employed in the PVH population with variable success. ERA trials in systolic heart failure have reported early exacerbations of heart failure secondary to fluid retention. Prostacyclin has been shown to improve cardiac index and decrease PVR in advanced heart failure, but create a strong trend toward increased mortality. PDE-5 inhibitors may be a potential therapy for

TAKE HOME POINTS

1. Pulmonary hypertension should always be included in the differential diagnosis for breathlessness and exercise intolerance.
2. Transthoracic echocardiography is the initial diagnostic tool if PH is suspected after the history and physical exam.
3. Right heart catheterization is the gold standard in the diagnosis of PH.
4. Pulmonary venous hypertension is common in patients with heart failure. Strict volume control, blood pressure control and titration of neurohormonal therapy are initial treatment strategies. PDE-5 inhibitors may provide additional benefit and studies are ongoing.
5. Referral to specialists in pulmonary hypertension for hemodynamic evaluation is recommended.



PVH. A growing body of evidence, in both experimental models and human studies, has shown that NO-dependent pulmonary vasodilatation is impaired in heart failure. Sildenafil (50 mg three times daily) administered in a randomized controlled trial of 44 patients with heart failure with preserved ejection fraction and PH demonstrated a substantial improvement in pulmonary pressures, RV function, LV diastolic function, and quality of life over a one year follow up. However, the recently published RELAX (Phosphodiesterase-5 Inhibition to Improve Clinical Status and Exercise Capacity in Diastolic Heart Failure) trial failed to demonstrate a significant benefit of sildenafil on clinical outcomes or exercise capacity. Of note, this study did not require the presence of PH. Small studies of patients with systolic heart failure and PVH have demonstrated safety, improved

hemodynamics, and increased exercise capacity with PDE-5 inhibitor use. Sildenafil 50 mg three times daily randomized to 45 NYHA class II/III patients with systolic heart failure on a stable heart failure regimen resulted in a significant increase in ejection fraction, 29.5% to 36.3%, $p < 0.01$, LV end diastolic dimensions, and LV mass index at 1 year compared to placebo. The effect of PDE-5 inhibitors on cardiovascular outcomes including mortality will be the focus of the multicenter PITCH-HF trial (PDE5 Inhibition with Tadalafil Changes Outcomes in Heart Failure) in patients with LVEF $< 40\%$ and secondary PH. The body of evidence for PDE-5 inhibitor use is growing, but further research is needed.

Pulmonary Hypertension: Types and Treatments. Lisa J. Rose-Jones and Vallerie V. McLaughlin. Current Cardiology Reviews, 2015, 11, 73-79

AmbrisantTM 5

Ambrisentan 5 mg Tablet

***Specific treatment option for PAH,
distinctly superior to Bosentan***

- Slows the worsening of PAH
- Well tolerated in children having PAH
- Improves WHO Classified PAH
- Improves exercise ability
- US FDA approved

*PAH-Pulmonary Arterial Hypertension



SQUARE
PHARMACEUTICALS LTD.
BANGLADESH

www.squarepharma.com.bd
facebook.com/SquarePharmaLtd



twitter.com/SquarePharmaBD

Heart for LifeTM



Cardiology News

Longer Transfused Red-Cell Storage Doesn't Worsen Cardiac Surgery Outcomes

There's no important clinical benefit from preferring red blood cells (RBC) that have been stored for <10 days vs at least 3 weeks for use in patients undergoing major cardiac surgery. The multicenter Red-Cell Storage Duration Study (RECESS), with its >1000 patients aged 12 years or older, saw no significant differences between use of the two types of stored erythrocytes in an end point reflecting onset of multiple organ dysfunction or mortality at either 7 or 28 days after surgery or in length of intensive-care-unit (ICU) stay.

N Engl J Med 2015; 372:1419-1429

Single Risk Factor Heightens Stroke Risk in AF Patients

Patients with atrial fibrillation (AF) who have no other additional risk factors, aside from gender in the case of females, are at a very low risk for stroke and bleeding, according to registry data from Denmark. But with just one additional risk factor, there is a significant increase in the risk of stroke and mortality if the patient is not receiving oral anticoagulation therapy. For untreated men and women with a CHA₂DS₂-VASc score of 1 and 2, respectively, the risk of stroke increased more than twofold and the risk of death increased more than threefold compared with individuals without any risk factors.

J Am Coll Cardiol 2015; 65: 1395-1397

Folate Supplementation in HTN May Lower Risk for First Stroke

After years of negative trials from Western researchers examining folic-acid supplementation for prevention of cardiovascular events, researchers from China are reporting significantly positive results from use of the substance. The China Stroke Primary Prevention Trial (CSPPT), which included more than 20,000 adults with hypertension but without a history of MI, showed that daily treatment of 10-mg enalapril plus 0.8 mg of folic acid for 4.5 years reduced the risk of first stroke (the primary outcome) by 21% compared with taking enalapril alone. The folic-acid/enalapril group also showed significant risk reduction in first ischemic stroke and a composite of cardiovascular events, but not in hemorrhagic stroke or MI.

JAMA 2015; DOI:101001/jama.2015.2274

COPD Tied to Elevated Risk for Sudden Cardiac Death

Individuals with chronic obstructive pulmonary disease (COPD) have a greater than one third overall increased risk for sudden cardiac death (SCD) compared with healthy age- and sex-matched adults, according to new research from the Rotterdam Study. More than 5 years after COPD diagnosis, SCD risk almost doubles, and in patients with frequent exacerbations, the risk rises more than threefold. The risk was particularly exaggerated beyond 2000 days (5.48 years) after COPD diagnosis. Among patients with a higher degree of baseline systemic inflammation, those patients with frequent exacerbations such as coughing and dyspnea had a more than threefold increase in SCD risk. Among a host of possible causative mechanisms, the researchers noted COPD's association with an increased risk for ventricular arrhythmias and prolongation of the heart's QTc interval. They also point out that several characteristics typical of COPD are also risk factors for SCD, including a higher resting heartrate, hypoxia, hypoxemia, cardiac ischemia, and heart failure.

Eur Heart J. Published online April 28, 2015.

Editorial Board

Dr. Omar Akramur Rab, MBBS, FCGP, FIAGP
Kazi Md. Mizan, M.Pharm

Executive Editor

A.Z.M. Rashed
e-mail: azm-rashed@squaregroup.com
Cell: 01755644902

Ambrisan™ 5

Ambrisentan 5 mg Tablet

**Specific treatment option
for PAH**

Nebita™ 2.5 mg
5 mg

Nebivolol Hydrochloride Tablet

The 3rd generation β-blocker

Angilock® 25 mg
50 mg
100 mg

Losartan Potassium Tablet

**The trusted
Angiotensin Receptor Blocker**

Bisocor® 2.5 mg
5 mg
10 mg

Bisoprolol Tablet

The most selective β₁- blocker

Editorial Note

Dear Doctor,

We are happy to present the 37th issue of "Insight Heart". It is a small endeavor to provide you compiled & updated information on cardiovascular diseases and its management. This issue is focused on "**Pulmonary Hypertension**". We will appreciate your thoughtful comments.

Thanks and regards.